

Warm up:

1. FW-- What are the characteristics of a good math class?

2. Solve (show all your work)

$$-1\frac{7}{8} + (-3\frac{1}{2}) =$$

$$-1\frac{7}{8} + (-3\frac{4}{8})$$

$$\begin{array}{r} -1\frac{7}{8} \\ -3\frac{4}{8} \\ \hline -5\frac{11}{8} = 1\frac{3}{8} \\ \boxed{-5\frac{3}{8}} \end{array}$$

i.e. 1.6 pg. 84

11b.

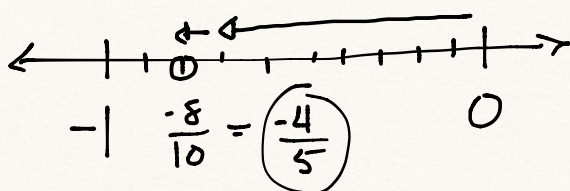
$$\frac{7}{12} + (-\frac{3}{4}) \cdot \frac{3}{3} = \frac{-2}{12} = \frac{-1 \cdot 2}{2 \cdot 3 \cdot 2} = \frac{-1}{6}$$

$$\frac{-9}{12} \quad -\frac{1}{6}$$

12b.

$$\begin{array}{r} -9\frac{1}{3} + (-12\frac{5}{6}) \\ -9\frac{1}{3} \cdot \frac{2}{2} = \frac{2}{6} \\ + \frac{-12\frac{5}{6}}{\hline} \\ 21\frac{7}{6} = 1\frac{1}{6} \\ +1 \quad \frac{7}{6} \\ \hline \boxed{-22\frac{1}{6} \text{ ft}} \end{array}$$

$$1. -\frac{7}{10} + (-\frac{1}{10})$$



$$6. 2\frac{3}{4} + (-7\frac{1}{2})$$

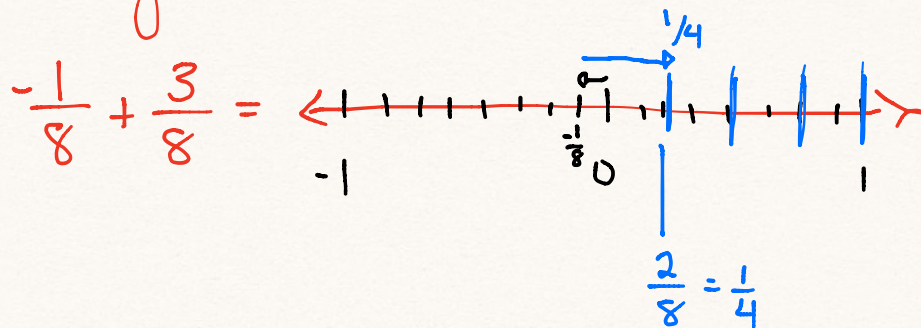
$$\begin{array}{r} \frac{3}{4} - \frac{2}{4} \quad -7\frac{2}{4} \\ \hline -7 + (-\frac{2}{4}) \end{array}$$

$$6 \cancel{7} \frac{2}{4} + \frac{4}{4} = \frac{6}{4}$$

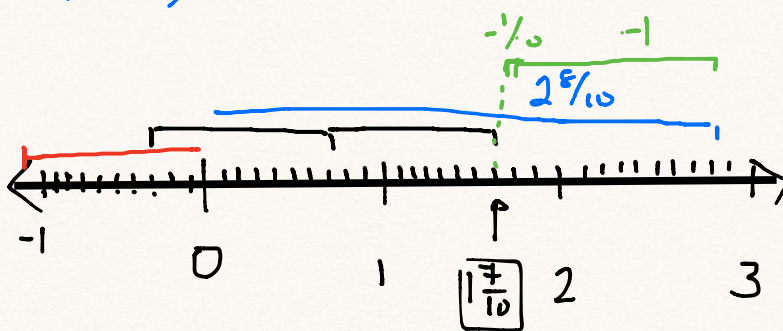
$$2\frac{3}{4}$$

$$\boxed{-4 \frac{3}{4}}$$

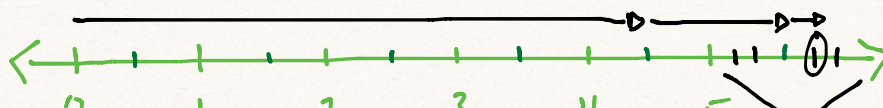
Modeling with Numberlines



$$2\frac{4}{5} + (-1\frac{1}{10}) =$$



$$1\frac{1}{3} + 4\frac{1}{2} = \underline{\hspace{2cm}} \quad ?$$



$$\begin{array}{ccccccc}
 \checkmark & & \checkmark & & \checkmark & & \checkmark \\
 & & & & & & 6^{+k} \\
 \boxed{5 \frac{5}{6}}
 \end{array}$$